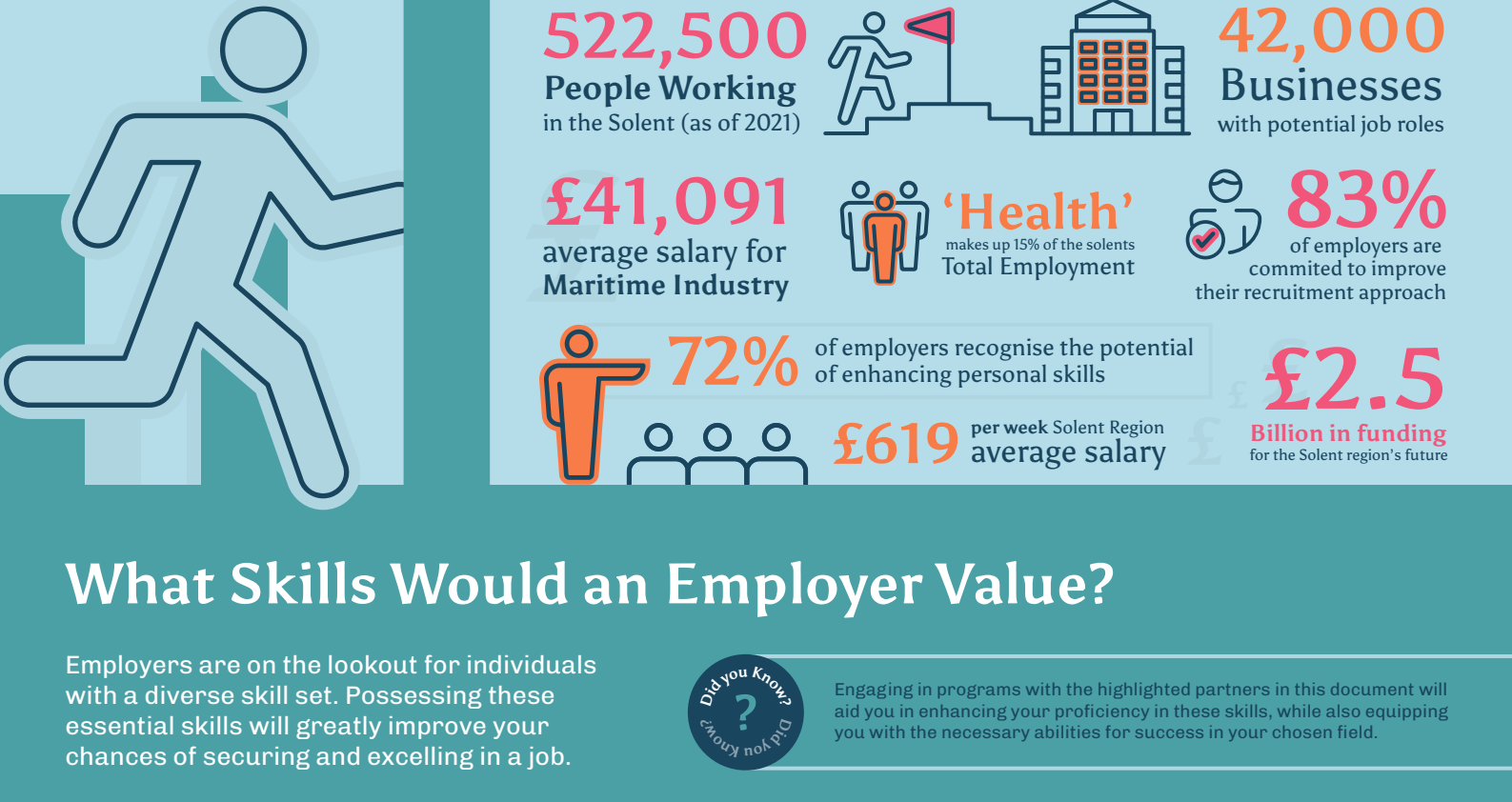


Career Opportunities For You Available in the Solent Region

Recent research has highlighted specific career opportunities in the Solent region. This infographic explores key sectors and outlines potential pathways for your future!



What Skills Would an Employer Value?

Employers are on the lookout for individuals with a diverse skill set. Possessing these essential skills will greatly improve your chances of securing and excelling in a job.

Did you know? Employers value you!

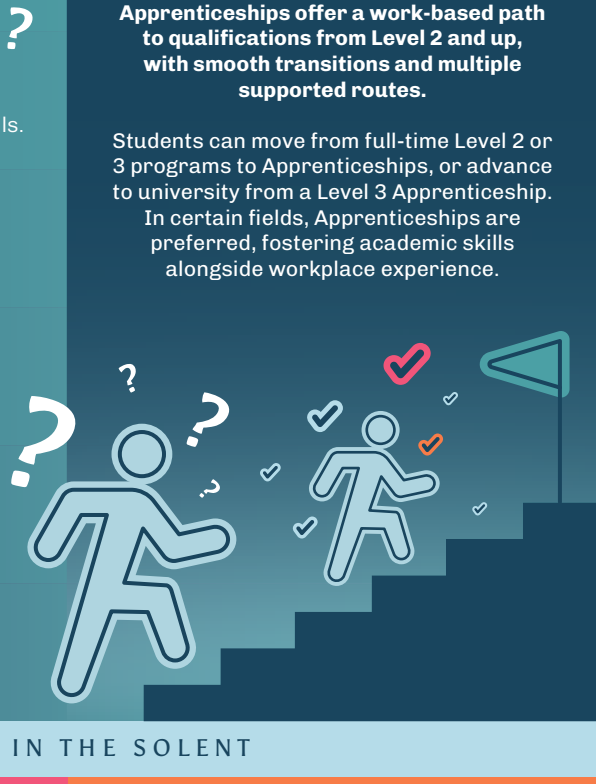
Engaging in programs with the highlighted partners in this document will aid you in enhancing your proficiency in these skills, while also equipping you with the necessary abilities for success in your chosen field.

- Leadership
- Resilience
- Strong Work Ethic
- Digital Literacy
- Creative Thinking
- Professionalism
- Teamwork
- Problem Solving
- Communication



WHICH LEVEL IS RIGHT FOR YOU?

- 1** Preparing students for Further Education by providing subject-specific content, employability skills, work experience, and the chance to retake English and Maths GCSEs.
- 2** Helping students enhance core skills before further study. Some technical fields, like Construction and Hairdressing/Beauty, may require starting at Levels 1 or 2 to develop essential hands-on skills.
- 3** Most common level studied by school leavers who enter Further Education. Typically these courses require 5 GCSE results grade 9-4 including English and Maths or a satisfactory Level 2 grade.
- 4** Commonly known as Higher National Certificates (HNCs), are designed to support students to develop and expand existing skills from A Level 3 qualification. Level 4 qualifications form the first part of a Foundation Degree, which consists of two years of study.
- 5** Equivalent to the second year of a Bachelor's degree and form the second part of a Foundation Degree designed to advance the skills and knowledge learnt at Level 4
- 6** The primary undergraduate qualification, widely pursued by students. Additionally, you can start with a Foundation Degree and upgrade to obtain a full undergraduate qualification.

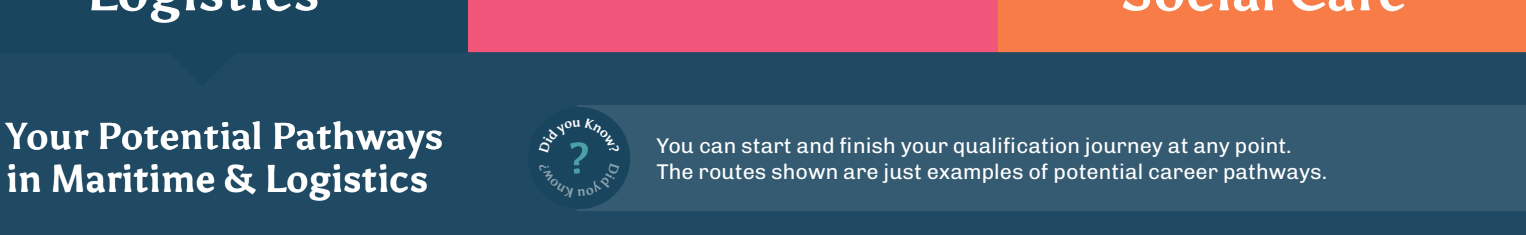


APPRENTICESHIPS

Apprenticeships offer a work-based path to qualifications from Level 2 and up, with smooth transitions and multiple supported routes.

Students can move from full-time Level 2 or 3 programs to Apprenticeships, or advance to university from a Level 3 Apprenticeship. In certain fields, Apprenticeships are preferred, fostering academic skills alongside workplace experience.

THE BIGGEST OPPORTUNITIES FOR YOU IN THE SOLENT



Your Potential Pathways in Maritime & Logistics

Did you know? You can start and finish your qualification journey at any point. The routes shown are just examples of potential career pathways.

Potential Qualifications (NON Prescriptive)	Possible Career Progression	Aspirational Career
Marine Technologies or Marine Engineering Level 2 Diploma Engineering & Manufacturing - Design & Development Level 3 T Level Marine - Boatbuilding Level 3 Apprenticeship Foundation Degree in Naval Architecture and Boat Design (Lvl 4 & 5 Only) Degree Yacht and Power Craft Design (Lvl 4, 5 & 6) Masters in Super Yacht Design (Lvl 7)	Boat Builder Computer Aided Design (CAD) Technician Marine Design and Development Engineer Marine Engineer	Naval Architect
L2 Marine Engineering Marine Technologies or Engineering Level 2 Technical Diploma or Engineering Operative Level 2 Apprenticeship Maritime Defence Level 2 Diploma Level 3 Diploma or Level 3 T-Level in Engineering Manufacturing: Processing and Control or Marine Engineering Technician Level 3 Apprenticeship L4/L5 HNC/HND Marine Engineering L5 HND Marine Engineering Cadetship Inc. Certificate of Competency as an Engineer Officer of the Watch	Marine Engineering Technician Electrical Engineer Mechanical Engineer	Marine Engineer
Pre-cadetship for the Merchant Navy Level 2 Diploma or Marine Technologies or Engineering Level 2 Technical Diploma or Engineering Operative Level 2 Apprenticeship or Engineering Technologies-Electrical Pathway Level 2 Diploma Pre-cadetship for the Merchant Navy Level 3 Diploma or Level 3 T-Level in Engineering and Manufacturing: Processing and Control or Marine Engineering Technician Level 3 Apprenticeship Electrotechnical (L3) Apprenticeship HND Marine Electrical and Electronic Engineering Cadetship which includes Certificate of Competency as an Engineer Officer of the Watch or HNC / HND Electrical Engineering (Lvl 4 & 5) BEng (Hons) Electrical Engineering Top up (Level 6 only) or Embedded Electronic Systems Design and Development Engineer Level 6 Apprenticeship (Lvl 4, 5 and 6)	Electrical Technician Electrical Supervisor Electrical Engineer	Marine Electrical Engineer
L2 Performing Engineering Operations L3 T Level Design & Development for Engineering and Manufacturing (Mechanical Pathway) Higher National Certificate (HNC) in Mechanical Engineering Level 4 L5 HND General Engineering	Mechanical Engineer	Mechanical Engineer
Marine Technologies or Marine Engineering Level 2 Diploma or Pre T-Level Engineering Level 3 T-Level in Engineering and Manufacturing: Processing and Control or Design and Development or Marine Engineering Level 3 Apprenticeship L4 /5 HNC/HND or Foundation degree in Engineering or Electrical Engineering or a L4 Automation and Controls Engineering Technician or Engineering Manufacturing Technician Apprenticeship Level 4, 5 and 6 Degree in Mechanical or Electrical engineering or a Degree Apprenticeship in Embedded Electronic Systems Design and Development Engineering	Maritime Technologist Marine Service Technician Engineering Technician	Marine Design and Development Engineer

Her Role is Just One of the **10,000 Jobs** expected in this Industry

Lots of Roles to choose from, with **20,000 FTE Jobs** across 2,700 enterprises

Vocational/Technical study to Postgraduate Levels in **Maritime Business, Operations**

Secure Your Future Role in **Ports, Leisure Marine, Marine Engineering, Port Logistics**



Your Potential Pathways in Creative Arts

Did you know? You can start and finish your qualification journey at any point. The routes shown are just examples of potential career pathways.

Potential Qualifications (NON Prescriptive)	Possible Career Progression	Aspirational Career
Level 2 Diploma in Creative Media Production Level 2 Diploma in Creative Media Production Level 2 Diploma in Music Production Level 3 Ext Diploma in Creative Media Production Level 3 Ext Diploma Performing Arts Level 3 Ext Diploma in Production Arts Level 4 Professional Diploma in Production Arts	Lighting Technician Lighting Assistant Operator AV Technician	Lighting Engineer Lighting Designer
Level 2 Diploma in Creative Media Production Level 3 Ext Diploma Music Production Level 3 Ext Diploma in Creative Media Production Level 4 Professional Diploma in Music Production Level 4 Professional Diploma in Production Arts Level 4 HNC in Creative Media Production (Film & TV)	Sound Technician Sound Assistant Operator AV Technician	Sound Engineer Sound Designer Sound Audio Designer
Level 3 Ext Diploma in Creative Media Production Level 4 Professional Diploma in Music Production Level 4 Professional Diploma in Production Arts	Live Events Technician Event Planner	Set Manager Events Production Manager
Level 4 Professional Diploma in Creative Enterprise Level 4 Professional Diploma in Production Arts	Set Construction Theatre Technician	Set Designer
Level 2 Diploma in Creative Media Production L3 T-Level Media, Broadcasting and Production	Production Assistant	Production Manager



Find a Range of **6,200 Jobs** in the Creative Sector

Study Vocational/Technical to Postgraduate Levels in **Digital Design, Game Development, Film Production**

Secure Your Employment In **Production, Set Design, Light & Sound Technician, Coding, Design**

Your Potential Pathways in Health & Social Care

Did you know? You can start and finish your qualification journey at any point. The routes shown are just examples of potential career pathways.

Potential Qualifications (NON Prescriptive)	Possible Career Progression	Aspirational Career
L1 Health and Social Care L2 Health and Social Care L3 T-Level Health Care L3 Diploma in Forensic & Criminal Investigation Programme	Support Worker Care Assistant Home Care Assistant Senior Care Worker Healthcare Assistant Mental Health Support Assistant Children's Services	Healthcare Professional Nurse Associate Registered Nurse
5 GCSEs Grade 9-4 including English, Maths and Science L3 Laboratory Technician Apprenticeship L3 Applied Science A Level sciences (Chemistry, Biology, Physics) L4 /L5 /LB in biomedical science, environmental science, forensic science, materials science, pharmacy, biology, chemistry or physics	Research Scientist Project Leader Laboratory Assistant Laboratory Supervisor Laboratory Manager Registered Science Technician	Medical Laboratory Technician
Level 3 Maths, Physics and Science L4 / L5 HNC / HND Biomedical, Applied Science, Electrical, Electronic or Mechanical Engineering L4 / L5 HNC/HND Robotics and Mechatronics Level 6 Biomedical, Electrical, Electronic or Mechanical Engineering Degree	Research Scientist Project Leader Medical Support Lead Medical Service Engineer Senior Clinical Engineer Biomedical Engineer	Clinical Engineer
5 GCSEs Grade 9-4 inc. English, Maths and Science L2 / L3 Applied Science and/or Chemistry L3 Pharmacy Technician Apprenticeship Pharmacy Foundation Degree	Pharmacy Assistant Lead Pharmacy Technician Department Manager Pharmacist	Pharmacy Technician
L2 Construction - Plumbing and Heating, or Electrical Installation and Maintenance L2 Mechanical Engineering L3 T-Level Building Services Engineering for Construction L3 T-Level Design, Survey and Planning for Construction L4 Engineer Surveyor Apprenticeship Surveying Construction Management	Estates Technician Estates Officer Facilities Manager Engineering Construction Technician Heating Engineer Lighting Engineer	Estates Management



Become a Healthcare Professional. The 'Health' Industry makes up **14.7% of Solents Total Employment**

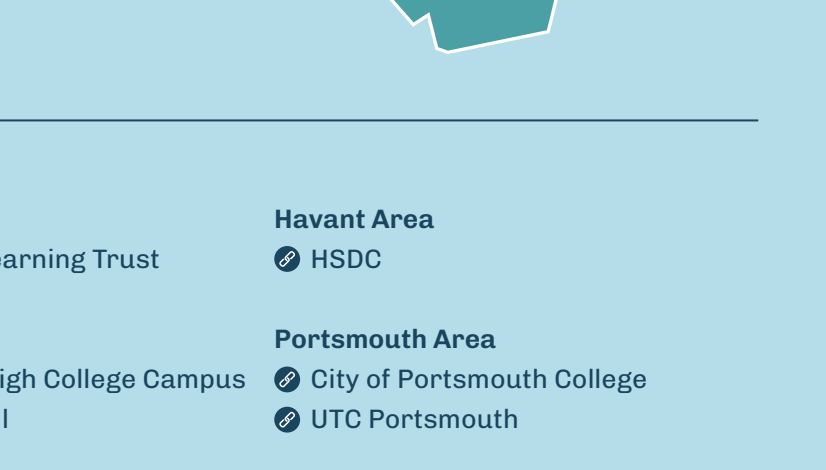
Find a Vocational/Technical study to Postgraduate Levels in **Health and Social Care Health Care Management Occupational Health Specialist**

Find your Purpose with a Future in **Nursing, Caregiver, Social Worker, Support Staff**

Take the next step towards your future

There are fantastic opportunities waiting for you in these sectors and beyond in the Solent region!

Follow the links below to uncover more about where you can dive into these amazing opportunities.



SHCG = South Hampshire College Group		
New Forest Area 📍 Brockenhurst College	Gosport Area 📍 Lighthouse Learning Trust	Havant Area 📍 HSDC
Southampton Area 📍 SHCG - Southampton Campus 📍 Itchen College	Eastleigh Area 📍 SHCG - Eastleigh College Campus 📍 Barton Peveril	Portsmouth Area 📍 City of Portsmouth College 📍 UTC Portsmouth
Isle of Wight Area 📍 HTP Apprenticeship College 📍 Isle of Wight College	Fareham Area 📍 SHCG - Fareham Campus 📍 South Coast Institute of Technology	📍 National Careers Service

*While this document shows a proportion of providers in the region, other providers are available

Find out more and read the full report